

# RF AMPLIFIER

## MODEL QBH-2832

Available as: QBH-2832, 080-22546-0001  
QBH-2832LF (RoHs Compliant)

### Features

- High Gain: 35.5 dB Typical
- High Power: +33 dBm Typical
- Replaces Old Motorola "2832" Design

### Specifications<sup>2</sup>

CHARACTERISTIC	TYPICAL Ta= 25 °C	MIN/MAX Ta=+25 °C
Frequency	1 - 200 MHz	1 - 200 MHz
Gain (dB)	35.5	34 Min/ 37 Max.
Gain vs. Temperature	—	—
Gain Flatness	±0.5	± 1.0 Max.
Reverse Isolation (dB)	—	—
VSWR	In Out	1.5:1 2.0:1 Max.
1 dB Compression (dBm)	+33	+31 Min.
3rd Order Intercept (dBm)	+48	+45 Min.
Noise Figure (dB)	4.5	6.0 Max.
Power	Vdc mA	+28 435

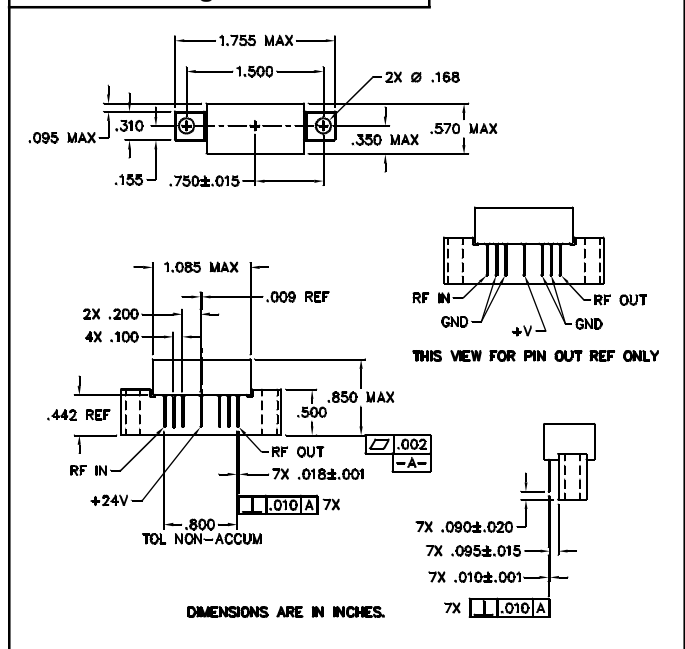
#### Notes:

1. Maximum operating temperature is defined as that temperature which, if exceeded for extended periods, could result in premature unit failure. This data is provided for user reliability information. This may or may not represent the maximum temperature for electrical parameter specifications.
2. Min/Max specifications are guaranteed when tested in a 50 Ohm system.

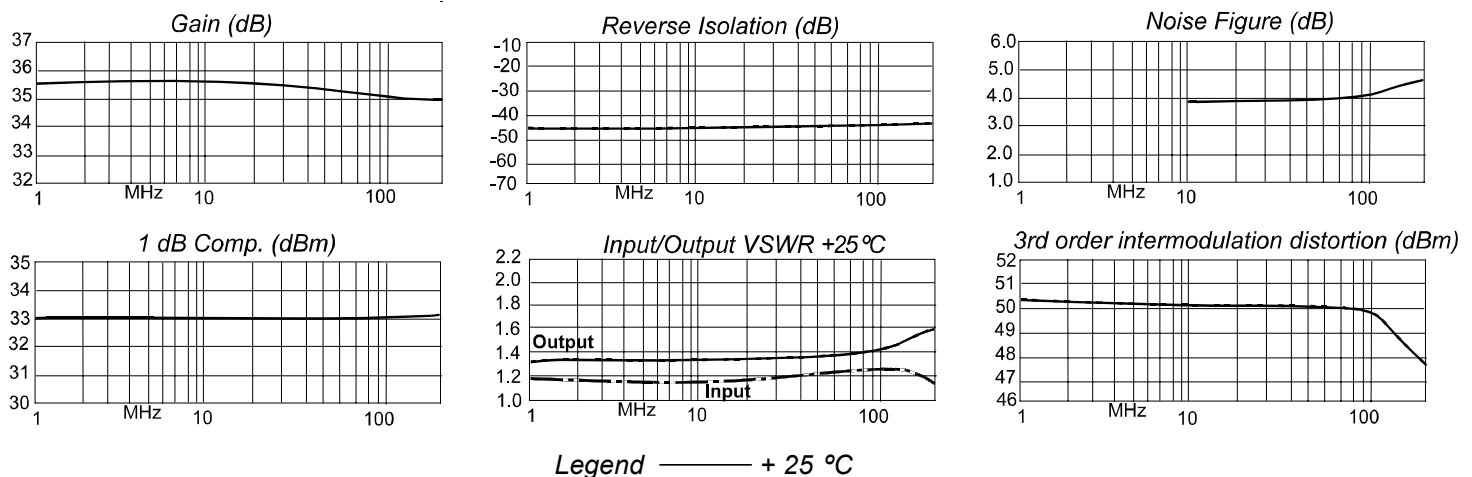
### Absolute Maximum (No Damage) Ratings

Operating Temperature<sup>1</sup> ..... -20 °C to +90 °C  
 Storage Temperature ..... -40 °C to + 100 °C  
 DC Voltage ..... + 30 Volts  
 Continuous RF Input Power ..... + 5 dBm  
 Short Term RF Input Power .... 100 Milliwatts (1 Minute Max.)  
 Maximum Peak Power ..... 0.1 Watt (3 µsec Max.)

### Outline Drawing: 080-22546-0001



### Typical Performance Data



Spectrum Microwave · 2144 Franklin Drive N.E. · Palm Bay, Florida 32905 · PH (888) 553-7531 · Fax (888) 553-7532

Rev.  
10/22/10

www.SpectrumMicrowave.com Spectrum Microwave · 2707 Black Lake Place · Philadelphia, Pennsylvania 19154 · PH (215) 464-4000 · Fax (215) 464-4001